

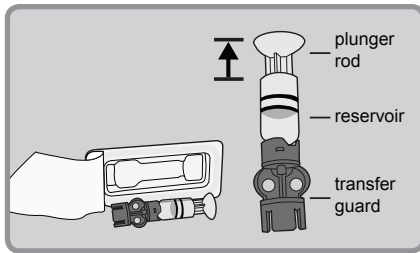
To Rewind the Piston in Pump:



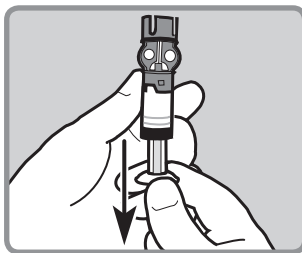
1. Wash your hands. Remove old infusion set from your body and the reservoir from pump.
2. Go to **Reservoir + Set** in **MAIN MENU**, then select **Reservoir Setup** to open **REWIND** screen. Press **ACT** to rewind.

To Fill the Reservoir:

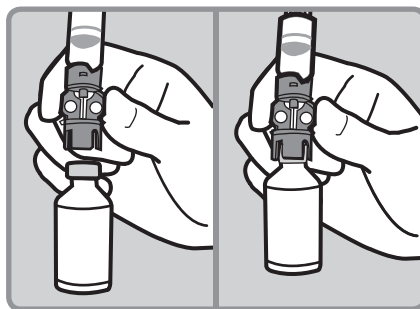
1. Remove reservoir from package.



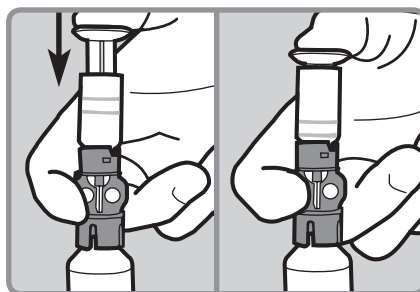
2. Pull plunger rod down to fill reservoir with air.



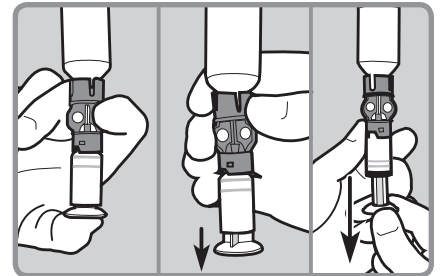
3. After wiping top of insulin vial with alcohol, hold blue transfer guard and press it down onto insulin vial.



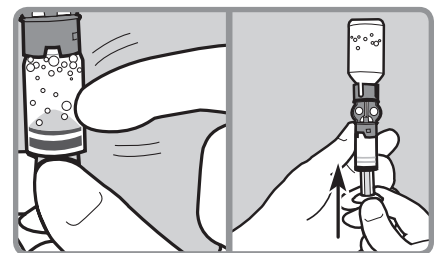
4. Use thumb to push air from reservoir into vial. Continue to hold plunger rod down.



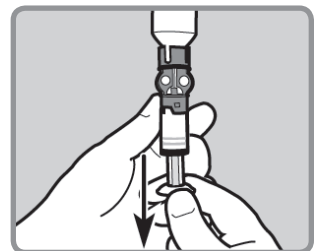
5. Continue to hold plunger rod down as you turn vial over (vial should now be on top and reservoir on bottom). Release plunger. Then slowly pull plunger rod down to fill reservoir with insulin.



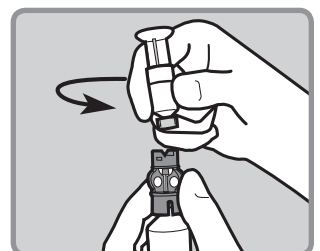
6. Check reservoir for air bubbles. Tap side of reservoir to force bubbles to rise to top of reservoir. Push plunger rod up to move air bubbles into insulin vial.



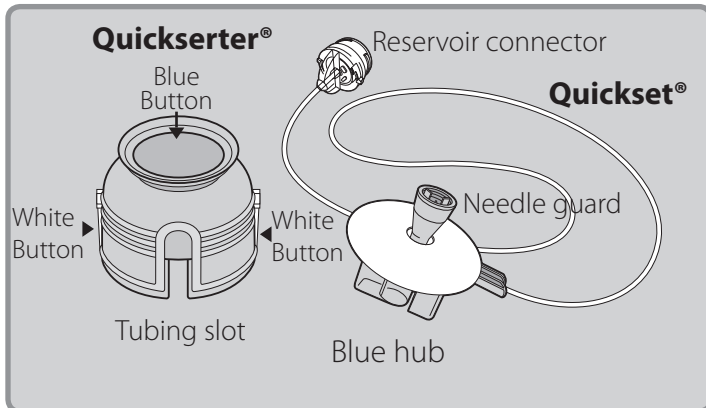
7. After air bubbles are removed, pull plunger rod back down to fill reservoir with enough insulin to last 2-3 days.



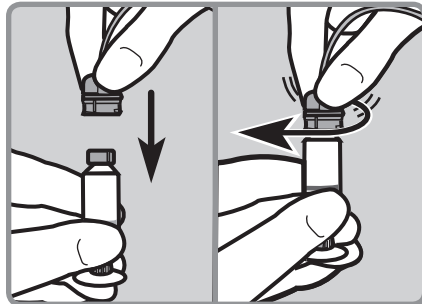
8. Flip vial over so it is now on bottom. Hold blue transfer guard with one hand. With other hand turn reservoir counter-clockwise and pull it straight up until disconnected from blue transfer guard. Disconnect blue transfer guard and dispose into a sharps container.



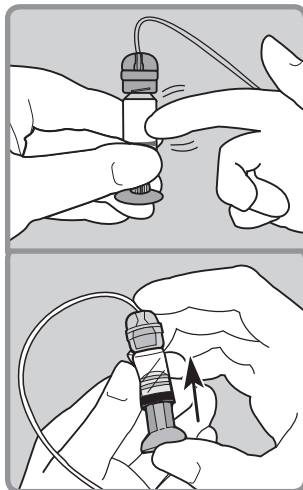
To Connect the Tubing:



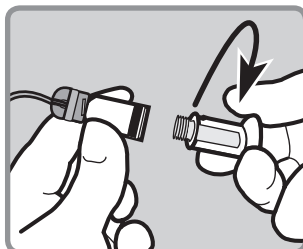
1. Remove Quickserter from package. Hold reservoir in one hand. With other hand gently push connector onto top of reservoir and turn clockwise until it slides and locks into place.



2. Tap side of reservoir to force any remaining air bubbles to rise to top. Push up on plunger rod until bubbles are out and some insulin is in tubing.

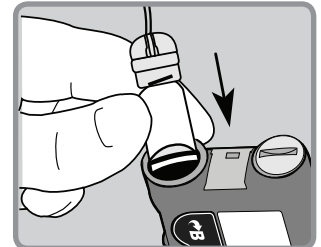
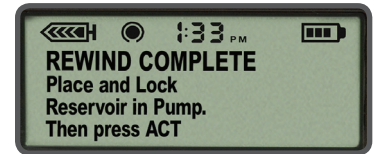


3. Turn plunger rod counter-clockwise until it unscrews from reservoir. Be careful not to pull out plunger rod from reservoir or insulin will spill out.

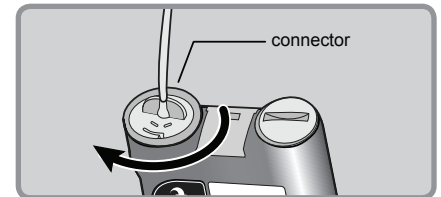


To Fill the Tubing:

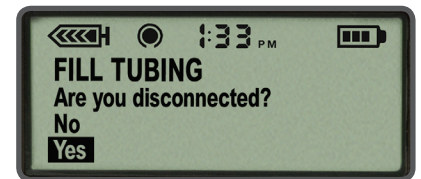
1. Press **ACT** so that **REWIND COMPLETE** appears. Insert newly filled reservoir into pump's reservoir compartment.



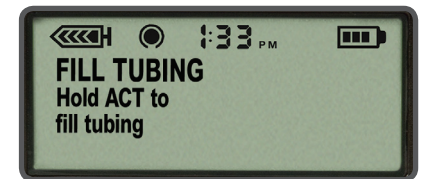
2. Turn reservoir clockwise until it locks into place.



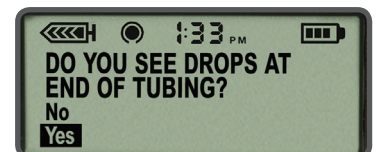
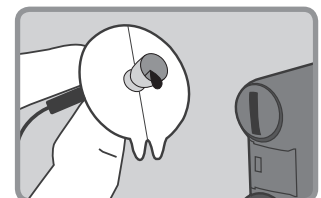
3. Press **ACT** to go to **FILL TUBING** screen. Be sure infusion set is **NOT** connected to your body. Then select **Yes** and press **ACT**.



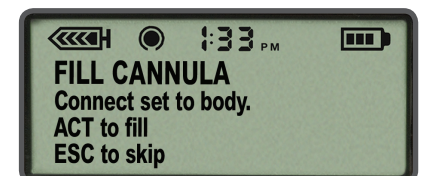
4. Press and hold **ACT** to fill tubing. The pump will beep as tubing fills. Release **ACT** when you see drops at tip of connector needle. Then press **ESC** once.



5. If you see drops at end of Quickset® needle and there are no air bubbles in the tubing, select **Yes** and press **ACT**.

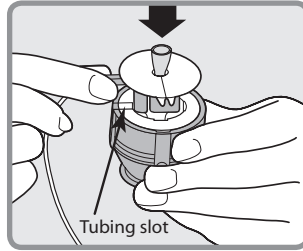


6. When the **FILL CANNULA** screen appears, you are ready to insert the Quickset® infusion set.

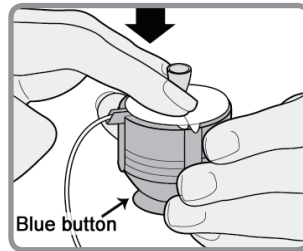


To Prepare Quickserter®:

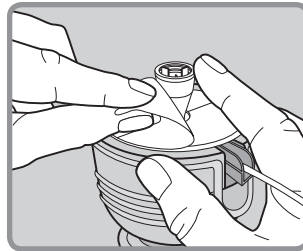
1. Place blue hub of Quickset® into Quickserter® insertion device. The handle and tubing should be lined up with tubing slot on Quickserter®.



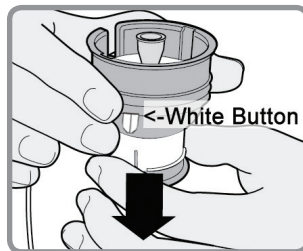
2. Use two fingers to seat the Quickset® inside serter securely, but do not push it all the way down. Be careful not to press blue button or Quickset® will not lock inside serter.



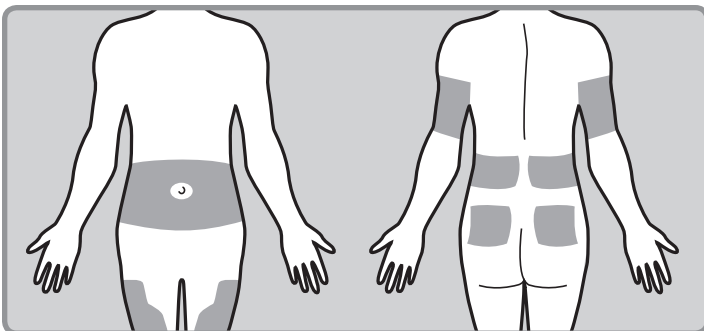
3. Peel paper from adhesive.



4. Pull blue button down until you hear it click. Be careful not to press white buttons on either side of serter.



Choose Insertion Site:

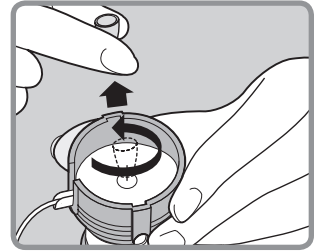


The best areas of the body to insert infusion set are shown in shaded areas of this drawing.

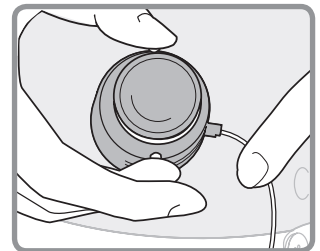
To Insert the Quickset® Infusion Set:

1. Wipe the selected insertion site with alcohol or other antiseptic wipe.

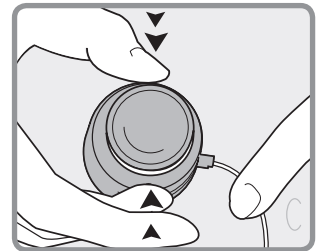
2. Carefully remove needle guard by turning it to loosen and lifting it away to expose needle of Quickset®.



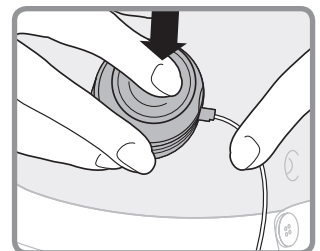
3. Hold serter against prepared site on body and locate the two white buttons on the serter.



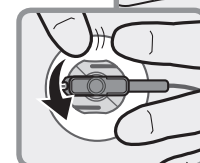
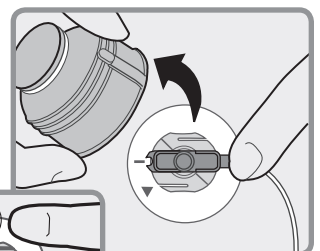
4. Press the two white buttons at the same time. If they are not pressed at the same time the Quickset® will not insert properly.



5. Press down on the top of the blue button of serter to release the Quickset® from the serter.

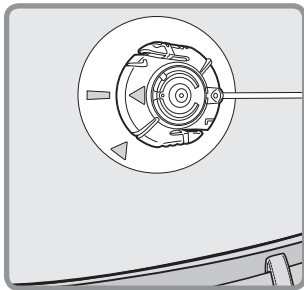
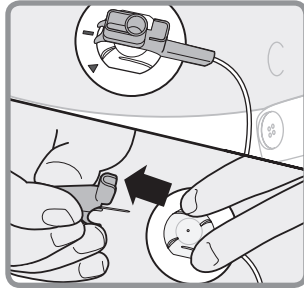


6. Pull serter away from body. Press adhesive securely against skin.

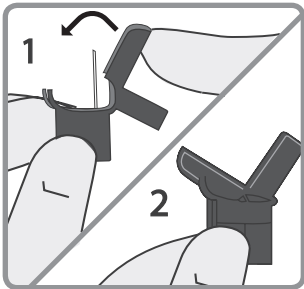


To Insert the Quickset® Infusion Set:

- With one hand, place fingers on Quickset®. With other hand hold blue handle and pull straight out to remove needle.

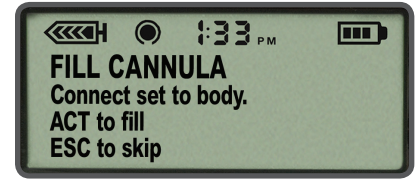


- Fold blue handle in half until it locks into place. Dispose into sharps container.



To Fill Cannula:

- If pump has returned to HOME screen, press **ACT**. At **FILL CANNULA** screen, press **ACT**.
- In order to fill empty cannula under skin press **▲** to enter 0.3 units of insulin (if you are using a 6mm cannula) or 0.5 units (for 9mm cannula) Press **ACT**.



OR

