

Additional Tape Tips: Options for Securing the Enlite® Sensor

The following tips may help people who experience adhesion or skin irritation issues. Trying different options will help determine which method works best for you.

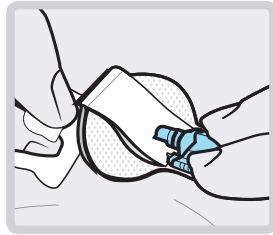
For maximum sensor performance, it is important to first insert the sensor and apply the overtape properly. Refer to the **User Guide** or **Quick Reference Guide for Using the Enlite Sensor** for the proper instructions.

Tips to Improve Adhesion

Tip 1 Liquid Adhesives: Use to prepare the skin to improve adhesion of tapes and dressings

Important: Do not apply liquid adhesives before sensor insertion

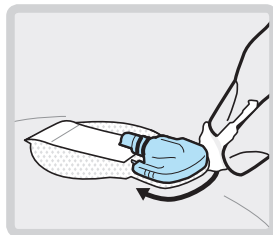
1. After insertion, remove needle and continue holding plastic sensor base
2. Before removing paper backing, apply liquid adhesive under adhesive pad and around area where overtape will be placed



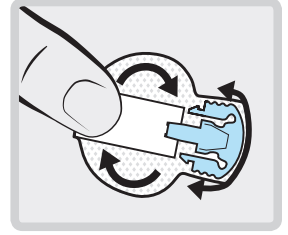
3. Allow at least 20 seconds for adhesive to dry before applying adhesive pad*



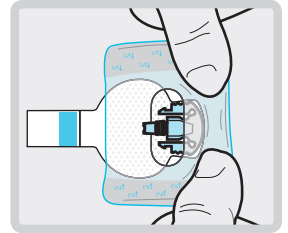
4. Apply extra liquid adhesive over the tape along the edge of sensor



5. Allow adhesive to dry before gently pressing all areas of adhesive pad



6. Unfold the tab and apply Enlite overtape following the steps in the user guide or quick reference guide

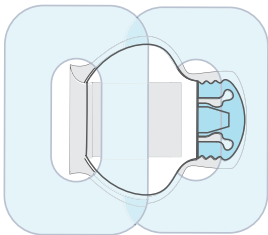


PRODUCT OPTIONS

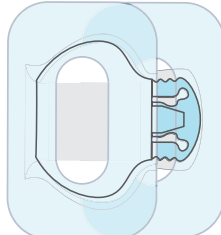
- Skin-Tac™ Wipes or Liquid:** www.torbot.com
- Improves adhesion and provides barrier between tape and skin
- Mastisol® Liquid Adhesive:** www.ferndalelabs.com
- A stronger adhesive that is resistant to moisture and humidity
 - Use of adhesive remover is highly recommended. May cause skin irritation

Tip 2 Additional Tape: Apply over the sensor and transmitter for added security

Enlite Overtape - Enhanced Taping Method



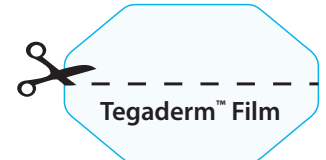
OPTION 1: Provides extra security and prevents moisture buildup



OPTION 2: Provides extra security and prevents transmitter from catching on clothing



IV3000™



Tegaderm™ Film

Other tape products may be cut into strips and placed over the transmitter*

PRODUCT OPTIONS

- Enlite overtape:** For convenience, there are 10 pieces of overtape in each box of sensors
- Tegaderm™ Film** www.3m.com: Provides strong adhesion and water resistance
- IV3000™** www.smith-nephew.com: A thin film that provides a balance of comfort and strength

For product ordering call 1.800.646.4633 or visit the online store at my.medtronicdiabetes.com

*Always reference manufacturer IFU or user guide for appropriate application instructions.

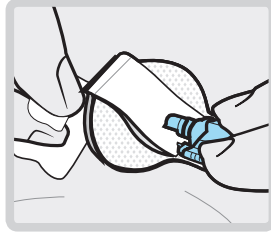
Additional Tape Tips: Options for Securing the Enlite® Sensor

Tips to Reduce Skin Irritation and Improve Comfort

Tip 1 **Adhesive Barrier Wipes:** Apply to skin before taping to reduce skin irritation

Important: Do not apply adhesive barrier wipes before sensor insertion

1. After insertion, remove needle and continue holding plastic sensor base
2. Before removing paper backing, apply adhesive barrier under adhesive pad and around area where overtape will be placed
3. Allow at least 20 seconds for adhesive barrier to dry before applying adhesive pad and tape*



PRODUCT OPTIONS

Skin-Prep™ Protective Barrier Wipes

www.smith-nephew.com

- Provides waterproof barrier that protects skin from irritation caused by adhesives

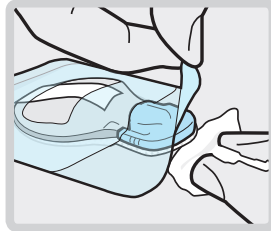
Skin-Tac™ Wipes or Liquid www.torbot.com

- Improves adhesion and provides barrier between tape and skin

Tip 2 **Adhesive Remover Products:** Apply to skin while removing tape to reduce skin irritation

Note: To reduce skin irritation, avoid using alcohol wipes when removing tapes and adhesives

1. Starting at one corner, slowly remove tape while applying adhesive remover along the edge of skin and underside of tape
2. Use adhesive remover to remove any adhesive residue remaining on the skin



PRODUCT OPTIONS

UNI-SOLVE™ Wipes www.smith-nephew.com

- Popular for tape and adhesive removal

TacAway™ Wipes www.torbot.com

- Mainly used in conjunction with Skin-Tac

Detachol® Liquid Adhesive Remover

www.ferndalelabs.com

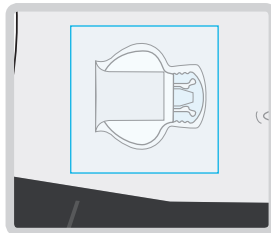
- Mainly used in conjunction with Mastisol

Tip 3 **Hypoallergenic Tapes:** Substitute Enlite Overtape with a low allergy tape product

If you experience skin irritation caused by the overtape, consider a hypoallergenic fabric tape such as Hypafix®

Hypafix® Overlay Taping Method

Cut to size, and cover entire sensor and transmitter with a flexible and breathable fabric tape such as Hypafix



PRODUCT OPTIONS

Hypafix® Tape www.smith-nephew.com

- Non-woven fabric material provides comfort while reducing skin irritation
- Applying a second piece after a few days may be required if the tape begins to loosen

NOTE: Hypafix is not available from the Medtronic store

For product ordering call 1.800.646.4633 or visit the online store at my.medtronicdiabetes.com

Note: Horizontal position of sensor and transmitter in this guide are for demonstrative purposes. A vertical orientation, with transmitter positioned above or below the sensor, may be preferred for some patients.

*Always reference manufacturer IFU or user guide for appropriate application instructions. Skin-Tac™ is a trademark of Torbot. Mastisol® is a registered trademark of Ferndale Laboratories. Enlite® is a registered trademark of Medtronic MiniMed, Inc. Tegaderm™ is a trademark of 3M. IV3000™, Hypafix®, Skin-Prep™, and UNI-SOLVE™ are trademarks of Smith & Nephew. TacAway™ is a trademark of Torbot. Detachol® is a registered trademark of Ferndale Labs. 940M11776-013 20140220 ©Medtronic MiniMed, Inc. 2014. All rights reserved.