

Continuous Glucose Monitoring (CGM): Pre-Training and Training Materials Checklists

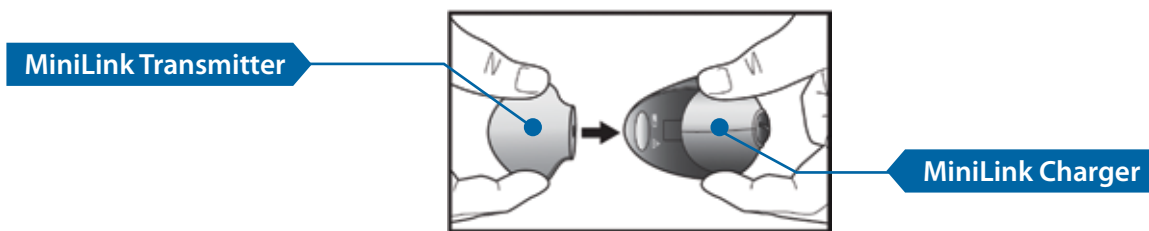
Congratulations on choosing the MiniMed Paradigm® REAL-Time System. With your new CGM system and the proper training, you are taking an important step towards a lifetime of improved diabetes control.

Pre-Training Checklist

Complete the following before meeting with your trainer:

☐ **STEP 1: Charge your new MiniLink® REAL-Time transmitter**

- ✓ Connect the MiniLink Transmitter to the charger. Hold the transmitter flat side down and push the two components together fully.



- ✓ The green light on the MiniLink Charger will flash on and off until charging is complete. Once fully charged, the green light will stay on for 15-20 seconds before turning off completely. The MiniLink Transmitter is fully charged once flashing has stopped completely. Full charge should take less than 5 minutes to complete, as the MiniLink comes pre-charged from the factory.
- ✓ Leave the transmitter on the charger, and place back in the box to bring to your training.

For further instructions on charging the MiniLink Transmitter, please see the MiniLink REAL-Time Transmitter User Guide included in the MiniLink box.

☐ **STEP 2: Review all documents in your training folder, including:**

- ✓ *Getting Started with Continuous Glucose Monitoring Guide*
- ✓ *Getting Started with CGM Learning Guide*
- ✓ *Getting Started with CareLink™ Personal Software for CGM Guide*

☐ **STEP 3: Review the sensor section of the Insulin Pump User Guide located in your insulin pump box**

☐ **STEP 4: Review educational materials**

If you have internet access:

- ✓ Log onto www.medtronicdiabetes.com/learning and complete the CGM courses.
- ✓ Set up your CareLink Personal Therapy Management Software for Diabetes account at www.medtronicdiabetes.com/carelink.

Do not insert a glucose sensor or use your MiniLink Transmitter until you have attended training.

Training Materials Checklist

Items to bring on the day of CGM training:

☐ Insulin Pump

☐ MiniLink® REAL-Time Transmitter box and all items in the box:

- ✓ MiniLink Transmitter
 - ✓ MiniLink Charger (with AAA battery)
 - ✓ Sen-serter® insertion device
 - ✓ CareLink™ USB upload device
-

☐ White Medtronic folder and all items in the folder:

- ✓ This checklist
 - ✓ *Getting Started with Continuous Glucose Monitoring Guide*
 - ✓ *Getting Started with CGM Learning Guide*
 - ✓ *Getting Started with CareLink™ Personal Software for CGM Guide*
-

☐ Two glucose sensors

☐ Alcohol wipes

☐ Transparent dressing (IV3000™)

☐ Blood glucose meter, test strips and lancets

☐ Blood glucose logbook (with at least the previous week's readings listed) or printout of blood glucose information uploaded to CareLink Personal Software

☐ Insulin Pump User Guide (located in your insulin pump box)

☐ *MiniLink® REAL-Time Transmitter User Guide* (located in your MiniLink Transmitter box)

☐ Glucose tablets or a snack

☐ Additional items that may be requested by the trainer

- Certificate of Completion for your online CGM training

www.medtronicdiabetes.com

Medtronic
18000 Devonshire Street
Northridge, CA 91325
1.800.646.4633

